

All-in-one UC Workstation Redefine Your Workspace

The Yealink WH67 is the Industry-leading convertible DECT wireless headset, opening an entirely new form of desktop collaboration. Work seamlessly with major UC platform and integrate natively with Yealink IP Phones. 4.0 inch (480 x 800) capacitive touch screen of base offers newly work experience, just one touch, all control. Act as a workstation, managing phone calls, connecting with multiple devices (desk phone/mobile phone/computer), charging mobile phone wirelessly, and even playing a speakerphone's role. Best of all, deploying such a multifunctional workstation only needs to plug directly. Easiest things to do, greatest convenience to enjoy.



Acoustic Shield
Technology



Optima Audio
Experience



Touch Screen
LCD



Multiple Devices
Connection



Speakerphone
Mode



Built-in USB
Hub



Qi Wireless
Charger



Customizable
Busylight



WH67 Teams
WH67 UC

All-in-One UC Workstation

Desktop collaboration boosts efficiency a lot especially when Working from Home, but it can be also annoyed that the desktop is very messy with multiple device cables. Take control of your desktop collaboration environment with WH67:

- Connect all devices you want with built-in Bluetooth and USB port.
- Expand PC's connectivity with 2-port USB hub.
- Control all calls on the 4.0 inch (480 x 800) capacitive touch screen by simply finger touch.
- Function as a hand-free phone, freeing from wearing headset.
- Charge mobile phone wirelessly and transform it into nice efficient conferencing device.

Be Heard Crystal Clearly

With Yealink Acoustic Shield Technology, the two Microphones built in WH67 block the background noise automatically but ensure participant voice be heard clearly, greatly boost the communication efficiency.


Interruption Free

Busylight is enabled in WH67. With the light on the headset or BLT60 on the desk turning red, people around you would know that you are on the phone, instead of interrupting you unknowingly. Just stay focused on conversation, for higher efficiency, for better collaboration.

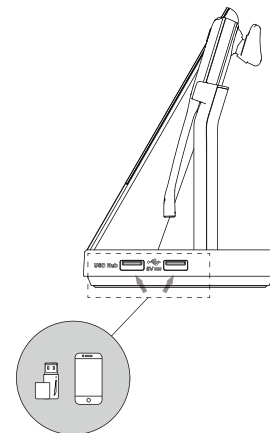
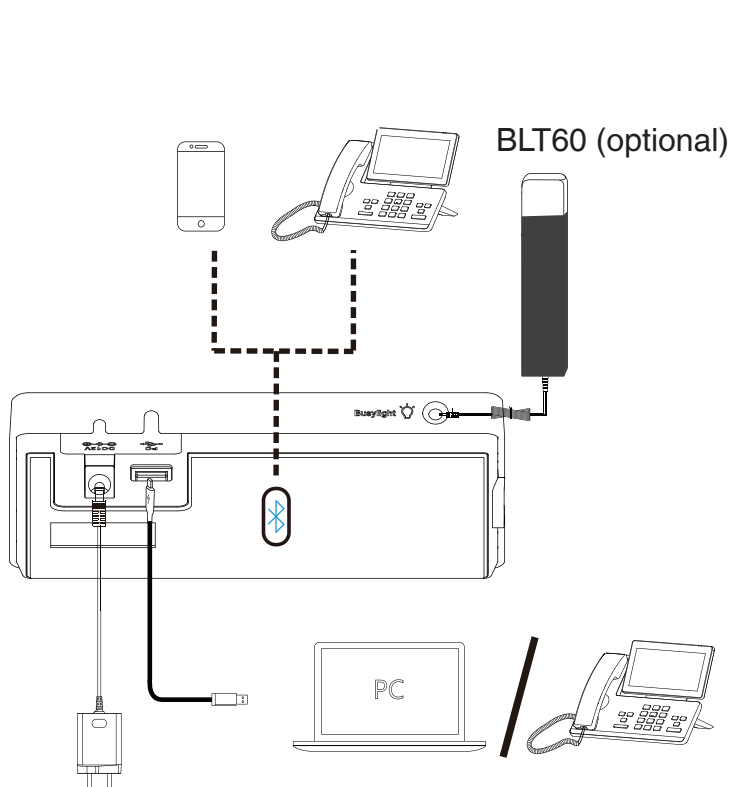


WH67 with charger
* Wireless charger is optional

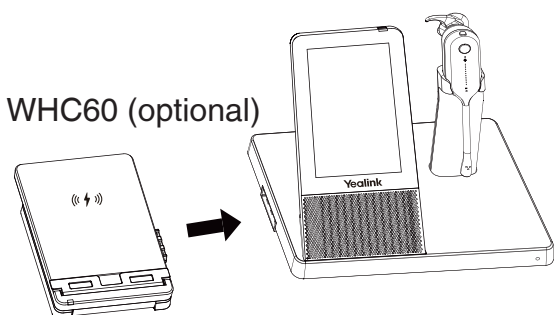
- 4.0 inch (480 x 800) capacitive touch screen
- Yealink Acoustic Shield Technology
- 2-ports USB 3.0 hub
- Wireless mobile phone charger
- Crystal speakerphone
- Supports busylight
- Teams and Skype for Business compatible

<p>General</p> <ul style="list-style-type: none"> • 4.0 inch (480 x 800) capacitive touch screen • 2 feature buttons • 1 Type-A USB 3.0 port • Built-in Bluetooth 4.2 • Connectivity: USB 3.0 & 2 x Bluetooth devices • Integrated busylight LED indicator • Built-in hub: 2 Type-A USB 3.0 ports • Charging stand (for headset) 	<ul style="list-style-type: none"> • Speaker sensitivity: 116+/-3 dB, 0.179 V • Speaker impedance: 32+/-4.8 Ω • Speaker max output power: 10 mW • Speaker frequency range: 20 Hz-14 kHz • Talk mode: wideband, 100Hz~8kHz, 16kHz sample rate • Hearing Protection <ul style="list-style-type: none"> - Peak Block Protection (EN50332) - Australian G616 Protection (AU G616) - Daily Noise Exposure Protection 	<ul style="list-style-type: none"> • Package contents: <ul style="list-style-type: none"> - Base - Headset - Earhook & eartips - Headband - Neckband - Power Adapter - 2* 1m USB 3.0 Cable - Quick Start Guide • Optional accessories: <ul style="list-style-type: none"> - Busylight BLT60 - Wireless Charger - Bluetooth Dongle BT50 • Qty/CNT: 10 PCS • Base: 344g, Headset: 19g • N.W/CTN: 9.76 kg • Giftbox size: 256mm*206mm*120mm • Carton Meas: 594mm*434mm*275mm
<p>Battery</p> <ul style="list-style-type: none"> • Talk time: up to 7 hours • Standby time: 54 hours • Charging time: 2.5 hours (12V/2A) <p>DECT</p> <ul style="list-style-type: none"> • Wireless range: up to 120m/394feet • Secure DECT (level): Step C: authentication – DSAA2, encryption – DSC2 (128bit) 	<p>Audio (Base)</p> <ul style="list-style-type: none"> • Microphone type: ECM Omnidirectional microphone • Microphone sensitivity: -38.0+/-2 dBV • Microphone frequency range: 70 Hz-20 kHz • Speaker size: 40mm*20.8mm • Speaker sensitivity: 97+/-3 dB • Speaker impedance: 4 Ω+/-15% • Speaker max input power: 4 W • Speaker frequency range: 160 Hz-20 kHz 	<p>Compliance</p> <p>CE  FC IC</p>
<p>Audio (Headset)</p> <ul style="list-style-type: none"> • Microphone type: dual microphone • Microphone sensitivity: -38.0+/-2 dBV • Microphone frequency range: 100 Hz-10 kHz • Speaker size: Φ 13.6 	<p>Easy Call Management</p> <ul style="list-style-type: none"> • Answer/End/Reject a call • Volume up/down • Microphone mute <p>Package Features</p>	

Connection

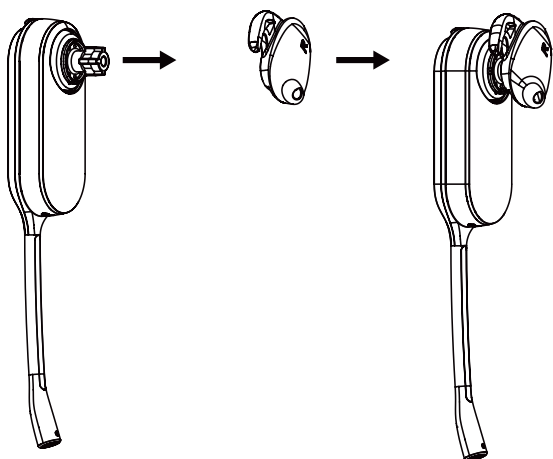


WHC60 (optional)

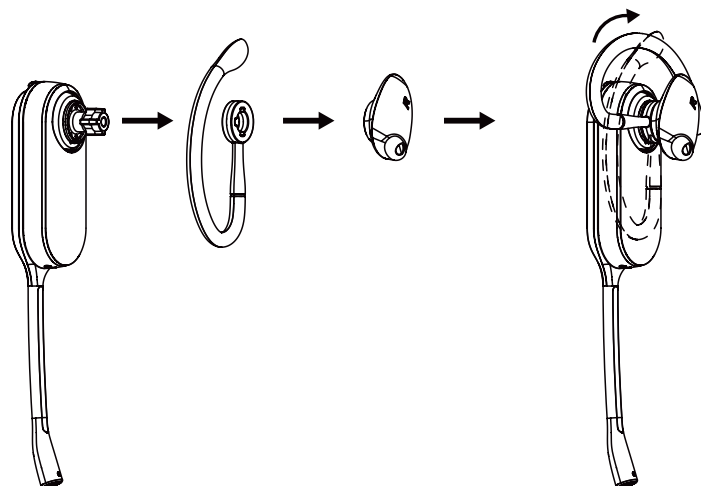


Wear

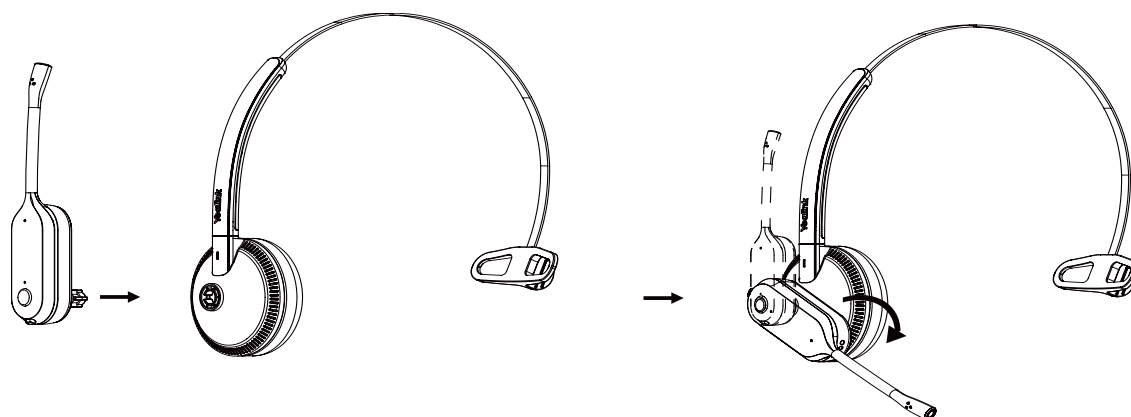
Eartip



Earhook & Eartip



Headband



Neckband

